



Southern™

PATIO ENCLOSURES

MOTORIZED ENCLOSURES

COMMERCIAL STRENGTH. TURNKEY SOLUTIONS.

The Best Patio Enclosures Nationwide.

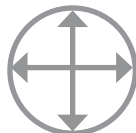
Customers love dining on patios. Which is why at Southern Patio Enclosures we help maximize your patio space by expanding your seasons and protecting your customers from uncomfortable weather in a moment's notice.

We have developed high-quality, adaptable products that can endure some of mother nature's worst days while easily transforming your outdoor space. Give your customers a safe, comfortable and an enjoyable place they love to be, while maximizing your seating capacity.

SOUTHERN PATIO ENCLOSURES OFFERS UNIQUE BENEFITS ABOVE AND BEYOND THE COMPETITION.



**Commercial-Grade
Components**



**Extra Wide
Extra Tall**



**Maximum
Wind Strength**



**Sophisticated
Design**



**Customized
for Your Needs**



**Easy Care
& Operation**



WHY SOUTHERN PATIO ENCLOSURES?

Commercial Partner

We partner with our clients, working together through the development of each system, and provide service after the sale. We work regularly with architects on individual and multi-site rollouts to provide technical details of our systems, integrating them within the design of the patio.

Nationwide Service

We provide service and installation options across the nation, making the implementation of your project as simple as possible.

Superior Product

We only offer the most durable, retractable products on the market, choosing the strongest fabrics and most durable construction techniques. Each of our products are custom-designed to meet your patio requirements.

Commitment to Customers

We have over 50 years of combined experience providing high-quality, custom patio enclosures and sun shades. Our goal is to meet the individual needs of our clients so that they can serve their customers effortlessly, no matter the weather.

BENEFITS OF AN ENCLOSED PATIO

Increase Your Daily Revenue

- Use your outdoor space daily, no matter the weather
- Add tables without adding rent, parking or restrooms
- Recapture your capital in 6-12 months*

Comfort for Your Customers

- Protect your clients from mother nature
- Add heaters or AC for more climate control
- Block the wind on water-front patios
- Retract curtains during nice weather
- Lower your wait times using your patio tables year-round

Additional Benefits

- Hide an unsightly view from your patio
- Create a private party space for your establishment

* Our motorized enclosure customers typically recapture their capital investment in 6-12 months with the additional available seating.

INDUSTRY-LEADING CONSTRUCTION

COMMERCIAL-GRADE COMPONENTS



Extruded aluminum roll-tubes with interior reinforcement

- Reinforced design allows our panels to expand extra-large openings without bowing.

Extruded aluminum track designed to fit rope welding

- Engineered for the strongest durability. Most competitors use metal tracks with plastic inserts and generic zippers, supplying a less secure fit, and are more easily blown out of their track.

Heaviest bar in the industry for gravity-assisted lowering

- Less hang-ups and more stability when raising or lowering.
- No drilling is necessary into the floor of your outdoor space for additional attachment points.

Panels are secured tightly into their side tracks, and are held at the bottom edge with a heavy weight bar.



EXTRA WIDE AND TALL PANELS



- Expand widths of up to 28 feet, and heights of up to 18 feet.
- Most competitors max out at 12 feet.

MAXIMUM WIND STRENGTH



- Withstand winds of up to 85 mph.
- Hurricane-strength certificate of up to 150 mph available if needed.



SOPHISTICATED DESIGN



Only the highest quality vinyl is used throughout our enclosures, adding to the durability, strength and aesthetic appearance.

- Rip-stop technology in our shade and colored vinyl protects against tears.
- UV-treatment and mold and mildew resistance keeps the vinyl windows clear and protects the colored vinyl from fading.
- Certified Flame and Fire Retardant vinyl for all 50 states. NFPA-701 Certification.

BEAUTIFUL CUSTOM DESIGNS

CUSTOMIZED FOR YOUR NEEDS



Shade Vinyl



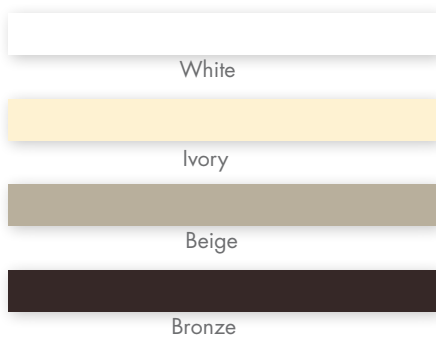
Colored Vinyl



Aluminum Hood



Aluminum Powder Coating



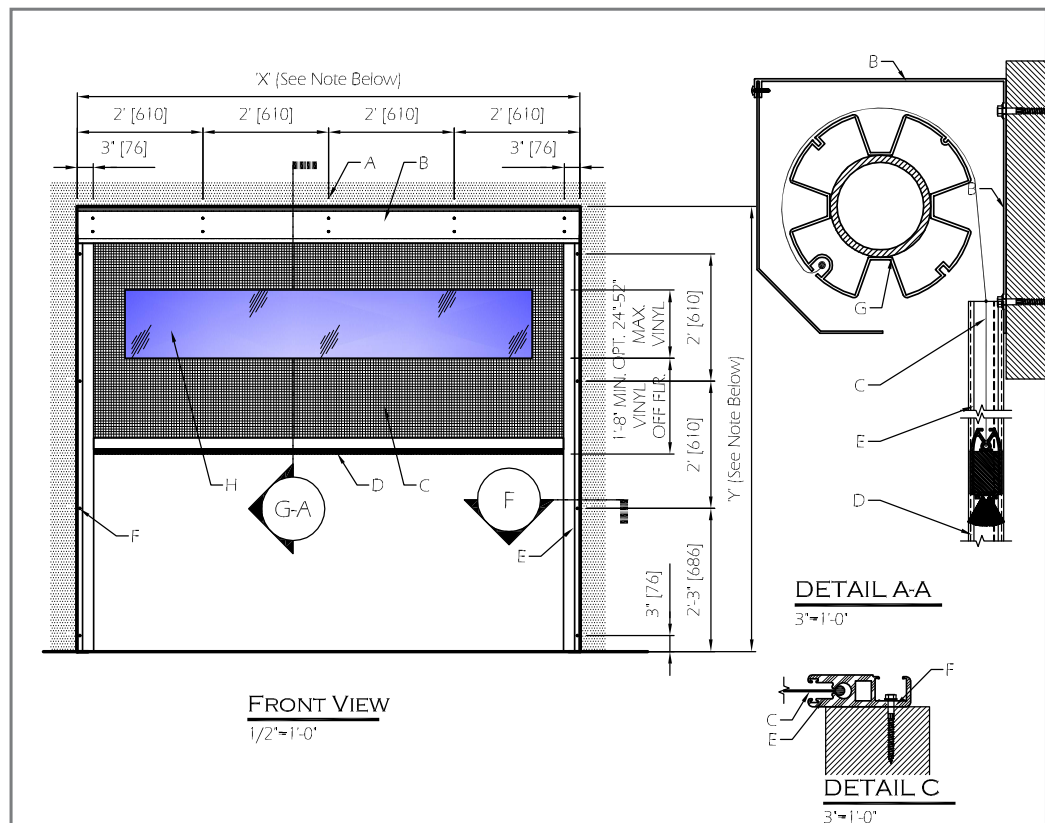
Each panel can be configured to expand widths of 28' and heights of 18'. Wider widths can be accommodated by adding a post.

Choose from multiple fabric options to fit your environmental and décor needs.

- Clear vinyl window inserts allow you to maintain your view and can be added to either of the following borders at no additional cost.
- Solid vinyl borders or panels add color or discretely hide unsightly surroundings.
- Shade borders or panels block up to 95% of the sun's heat and rays.

An aluminum hood encases the motor and roll-tubes for a clean, finished look. Or, the system can be completely recessed into your wall.

All of the aluminum is powder-coated to match your exterior, allowing for maximum rust resistance, even in coastal areas.



CARE AND OPERATION

EASY TO OPERATE



- Retract or deploy your motorized enclosures easily and quietly with the push of a button, without disturbing your customers.
- Control up to 16 panels with a single remote.
- Automation options available. Have your panels deploy automatically based on the weather or time of day.
- iPhone app remote available.
- Hard-wired switches are also available.



EASY TO CARE FOR

- Our enclosures are easy to maintain with clear vinyl polish and a micro-fiber mop.
- Brush strips along the edges of the hood self-clean the curtain each time it deploys and retracts.



BUILDING REQUIREMENTS FOR MOTORIZED ENCLOSURES

- Square and plum openings are required for an under-header mount. Non-square openings can be face-mounted or filled-in with a fixed panel. Your curtain enclosure may also be recessed completely into your structure and hidden from view when not deployed.
- Maximum width per curtain is 28 feet. Maximum height is 18 feet. Wider openings can be accommodated by adding a post.
- The curtains are constructed of shade or solid vinyl, with an option to add a 4 foot high, clear vinyl window.

TURNKEY SOLUTIONS

1. ORDER INITIATION

To place your order, a 50% deposit is required. Financing options are available.

2. DESIGN CONSULTATION

During the design consultation, we will discuss your project in detail to ensure every component is custom-fit to your structure and design. After you approve the design, your order will then be custom-built to these specifications.

3. INSTALLATION

- Professional installation by Southern Patio Enclosures is available and recommended for our motorized enclosures.
- If you choose to have your enclosures installed by your own contractor, products will be shipped directly to you and will arrive with step-by-step written and video instructions. Telephone support is also available for self-installations during regular business hours.
- Balance due upon completion of installation or or before shipment of product.

SERVICE AND SUPPORT

All Southern Patio Enclosure products are covered by a 3-year warranty on all materials and construction of your enclosure.

Additional service after the sale is provided by our teams strategically located across the U.S.A.

COMMERCIAL STRENGTH.
TURNKEY SOLUTIONS.

Southern[™]
PATIO ENCLOSURES 

Visit our online videos and learn:
[How to measure for your free quote](#)

SouthernPatioEnclosures.com

512-782-8787

Made in the U.S.A.